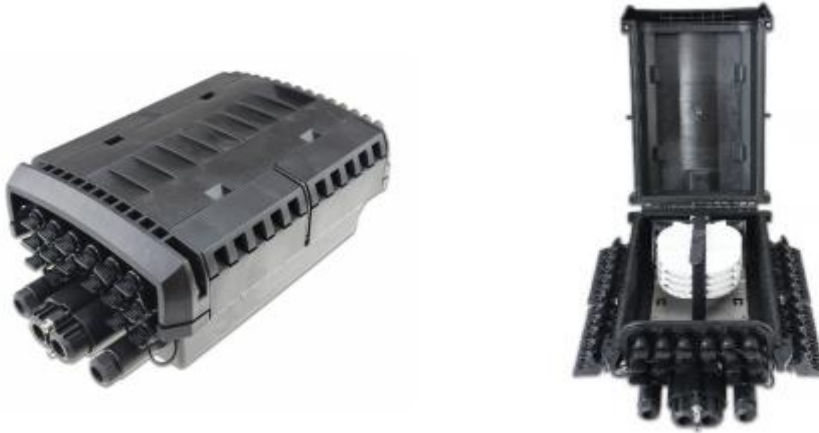


## Fiber Access Terminal Closure FATC016



Fiber Access Terminal Closure FATC016 is full rugged designed for wall mounted or pole mounted with IP68 waterproof grade with maximum 144 fiber splice capacity to connect the feeder cable with drop cable in FTTx network system.

### Features

- IP68 waterproof protection level
- Made with strengthen polymer plastic material , fire resistant
- Waterproof adapter for fast connection can be applied
- Plug and play installation, easy for maintenance and expansion
- 1x8 or 1x16 fiber splitter can be installed
- Reasonable design to ensure the bend radius more than 40mm
- Mechanical sealing structure and mid span cable entry
- 1 mid cable 10-16.5mm entrance for uncut cable and 2 mechanical glands for distribution cable 8-16.5mm

### Technical Parameters

Item	Parameter
Model	FACT016
Installation Way	Wall mounted/Pole/Aerial
Application	SM/MM 3.0x2.0mm drop cable or indoor cable
MAX Splicing point	144C, 6trays(24fiber /tray)
PLC Splitter	2pcs 1x8 splitter or 1 pcs 1x16 splitter
Material	Strengthen Polymer Plastic
Adapter	Reinforced SC OR SCAPC adapter
Weight	5kg
Pull force	100N