



HIGH DENSITY SOLUTION

MPO Panel and Modules Part

**CREATE MORE VALUE FOR YOU
CATERS TO YOUR REQUIREMENT**

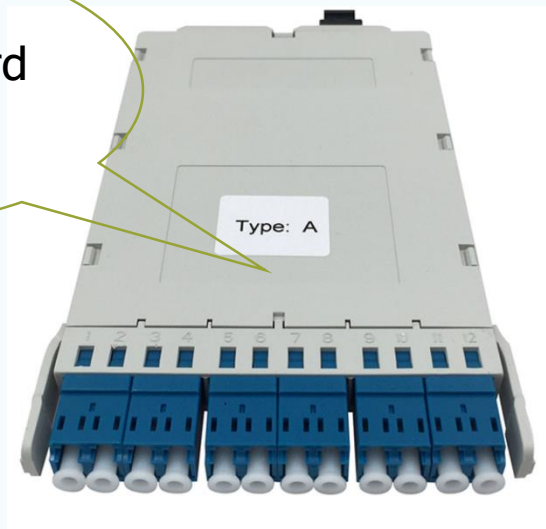
Fiber Zip Technology Co.,Ltd

www.fiberzip.net

HFDK MODULE

- ◆ Pull plug version with superior optical characteristics and mechanical characteristics
- ◆ Support fast installation, caters to high density cabling requirement
- ◆ Super light and thin
- ◆ Adopt fire resistance UL94 V0 material, safe and reliable

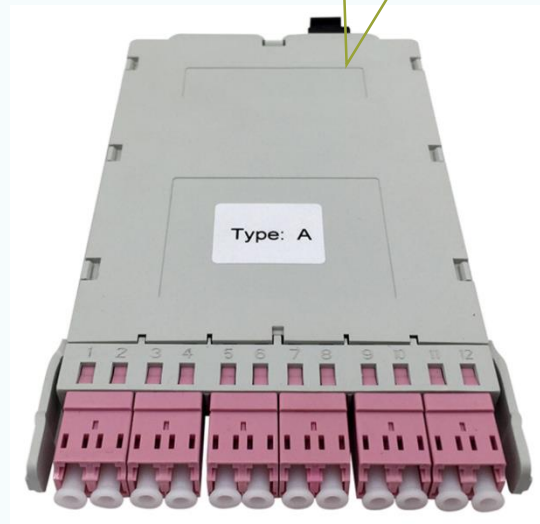
Polarity Standard
Type A



Without
Assemblies
inside
available



Designed for FHD-1
PATCH PANEL



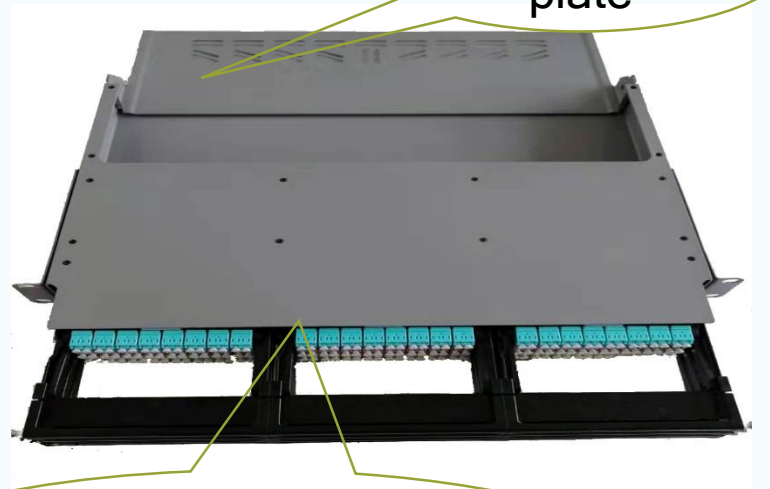
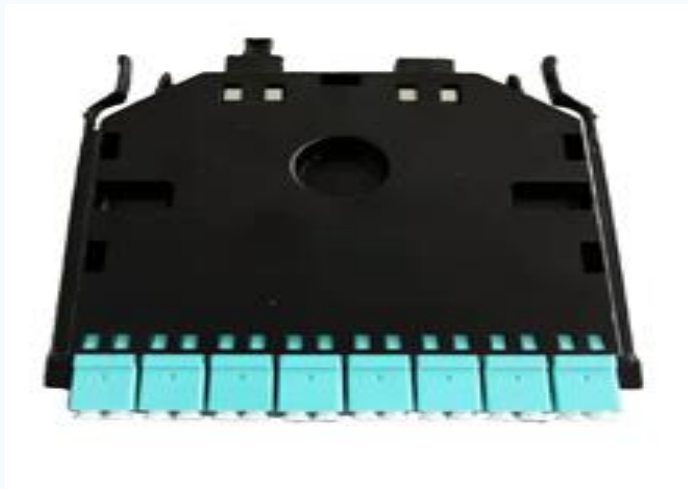
FHD-1 PATCH PANEL

- ◆ Ultra thin design, high density, 1U accommodate 144fiber
- ◆ Sliding draw with independent module to speed up the installation
- ◆ Standard 19" design,, metal material, up to 4U 576fiber



FHD-3 PATCH PANEL

- ◆ Ultra thin design, high density, 1U accommodate 144fiber
- ◆ Can access the module from front and rear side for easy operation
- ◆ Standard 19" design, metal material, up to 4U 576fiber
- ◆ 3*16F module or 3*6 port MPO/MTP adapter panel in each layer

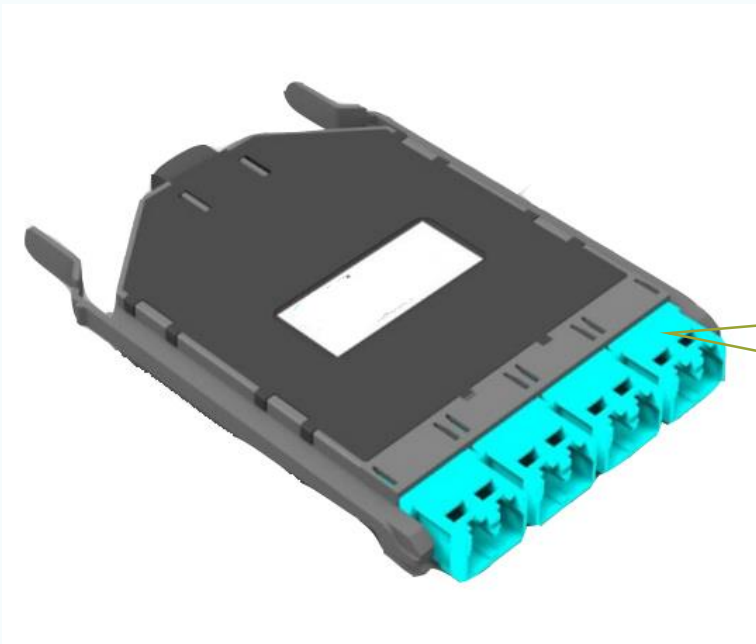


Extendable
plate

Module can be installed or
removed from front and
rear

UFHD PATCH PANEL

- ◆ Ultra thin design, high density, 1U accommodate 192fiber
- ◆ Can access the module from front and rear side for easy operation
- ◆ Standard 19" design, metal material, 384 fiber, 4U for 768 fiber
- ◆ SENKO CS connector and adapters



Senko CS adapters

FACE PLATE MODULE

- ◆ Toolless installation with snap in design
- ◆ MPO, SC, LC, FC adapter port for option
- ◆ Suitable for different type patch panels and MPO-LC plastic module
- ◆ Low loss insertion adapters to ensure the quality

SC 6F FPM01



LC 24F FPM01



SC 6F FPM02



LC 12/24F FPM02

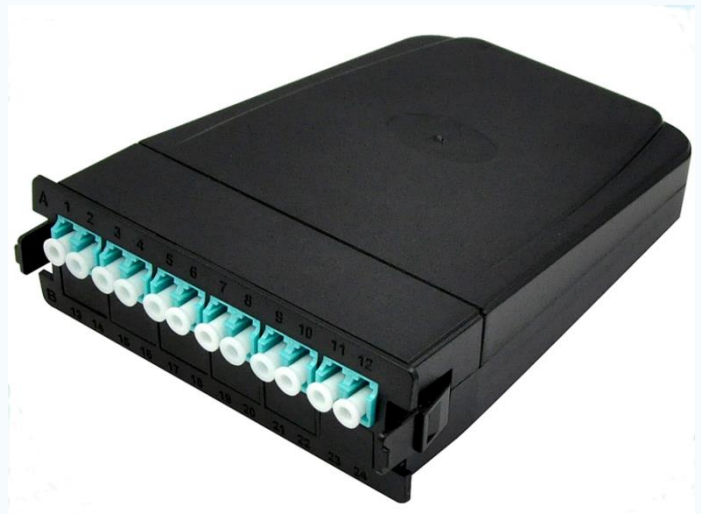


MPO/MTP-LC MODULE

- ◆ Toolless installation with snap in design
- ◆ With fire resistant material, small size
- ◆ Suitable for different type patch panels
- ◆ Low loss insertion adapters to ensure the quality



Adapter and assemblies available in different colors

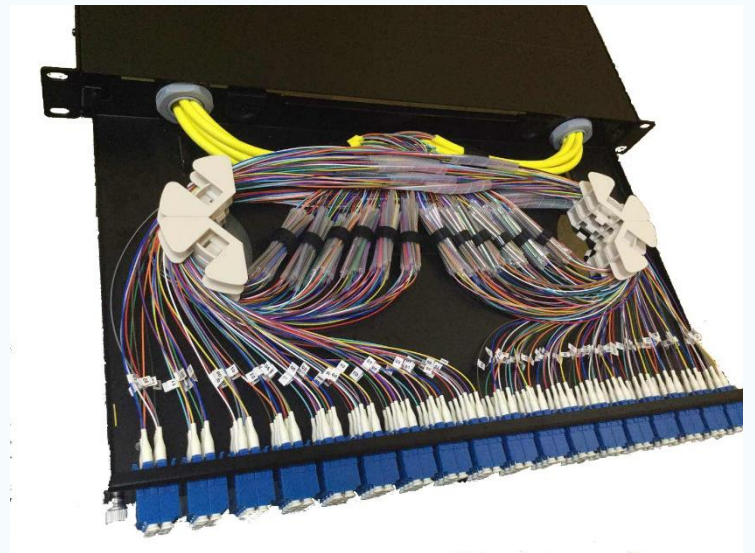


MULTI FUNCTION PATCH PANEL FMD-01

- ◆ Can splice 144 fiber in 1U rack
- ◆ Front adapter panel can be changeable
- ◆ Cable routing can be replaced with MPO-LC module
- ◆ Sliding out design, fully utilize the space and rack



For 96F
Splicing



144F
Splicing



Can
change to
96F MPO-
LC

MULTI FUNCTION PATCH PANEL FMD-02

- ◆ Accommodate 96 fiber in 1U rack with LC connector
- ◆ Can change to module and adapter plate
- ◆ Standard 1U size for rack mounted, stable quality
- ◆ Sliding out design, realize fiber termination, splicing and distribution, storage function



MULTI FUNCTION PATCH PANEL FMF-01

- ◆ Accommodate 96 fiber in 1U rack with LC connector
- ◆ Can change to module and adapter plate
- ◆ Standard 1U size for rack mounted, stable quality
- ◆ Fixes Version with upper and front panel can be opened without tool, realize fiber termination, splicing and distribution, storage function





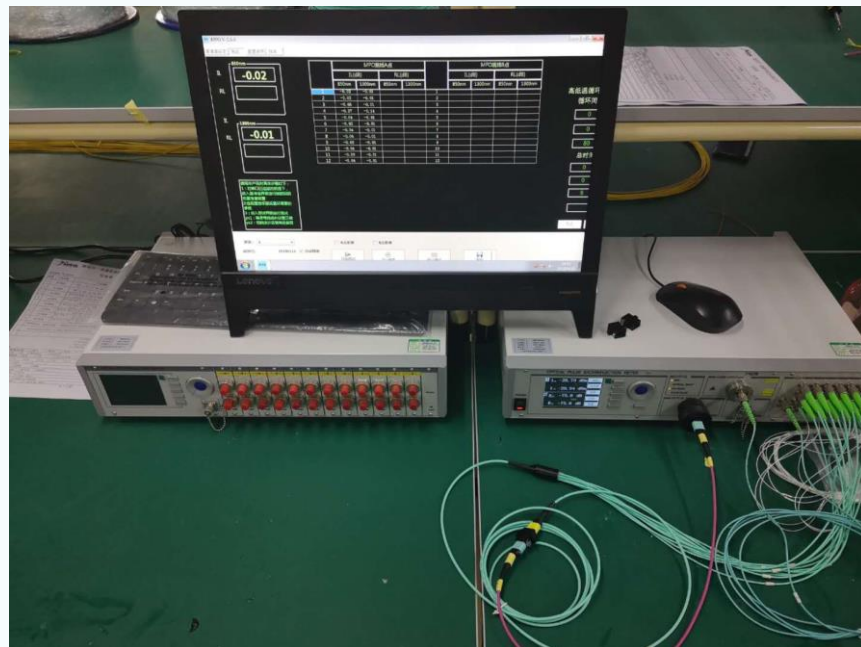
CONTACT US



sales@fiberzip.com



0086-13603027503



Fiber Zip Technology Co.,Ltd

www.fiberzip.net